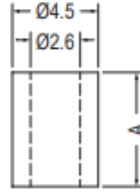
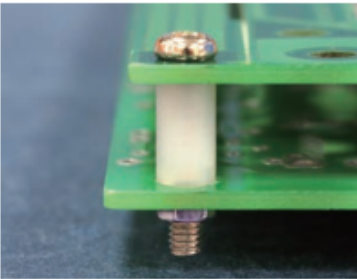


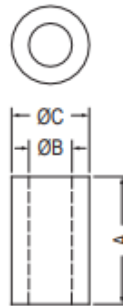
- Material: Nylon 66 (UL)/PBT (UL)
- Flame Class: 94V-2/94V-0
- Color: Natural/Black
- Unit: mm



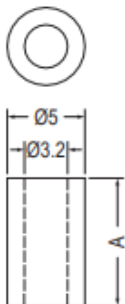
Part No.	A(L)	Package
2.6-2	2.0	2000
2.6-3	3.0	
2.6-4	4.0	
2.6-5	5.0	
2.6-6	6.0	
2.6-7	7.0	
2.6-8	8.0	
2.6-9	9.0	
2.6-10	10.0	
2.6-11	11.0	
2.6-12	12.0	
2.6-13	13.0	
2.6-14	14.0	
2.6-15	15.0	
2.6-16	16.0	



- Material: Nylon 66 (UL)
- Flame Class: 94V-2/94V-0
- Color: Natural/Black
- Unit: mm



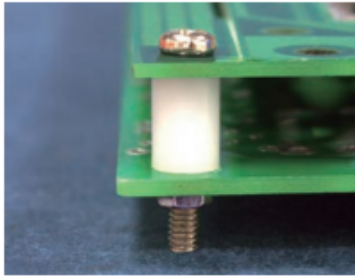
Part No.	A(L)	B(ID)	C(OD)	Package
3-20L	20.0	3.2	6.0	1000
3-38.1	38.1	3.05	6.35	



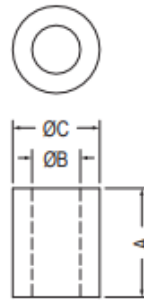
Part No.	A	Package
3-1.5	1.5	2000
3-2	2.0	
3-2.5	2.5	
3-3	3.0	
3-3.3	3.3	
3-3.5	3.5	
3-4	4.0	
3-4.2	4.2	
3-4.5	4.5	
3-5	5.0	
3-5.1	5.05	
3-5.5	5.5	
3-6	6.0	
3-6.35	6.35	
3-7	7.0	

Part No.	A	Package
3-7.5	7.5	2000
3-8	8.0	
3-9	9.0	
3-9.5	9.5	
3-10	10.0	
3-10.5	10.5	
3-11	11.0	
3-12	12.0	
3-13	13.0	
3-13.6	13.6	
3-14	14.0	
3-15	15.0	
3-15.5	15.5	
3-16	16.0	
3-16.5	16.5	
3-16.8	16.8	

Part No.	A	Package
3-17	17.0	1000
3-17.5	17.5	
3-18	18.0	
3-19	19.0	
3-20	20.0	
3-21	21.0	
3-22	22.0	
3-23	23.0	
3-24	24.0	
3-25	25.0	
3-26	26.0	
3-27	27.0	
3-28	28.0	
3-29	29.0	
3-30	30.0	
3-35	35.0	

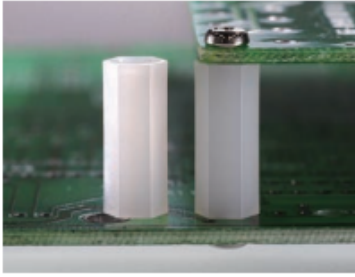


- Material: Nylon 66 (UL)
- Flame Class: 94V-2/94V-0
- Color: Natural/Black
- Unit: mm

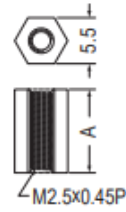


Part No.	A(L)	B(ID)	C(OD)	Package
3.5-1.6	1.6	3.5	6.3	2000
3.5-2	2.0	3.5	6.3	
3.5-3	3.0	3.5	6.3	
3.5-3.5	3.5	3.5	6.3	
3.5-4	4.0	3.5	6.3	
3.5-4.5	4.5	3.5	6.3	
3.5-5	5.0	3.5	6.3	
3.5-6	6.0	3.5	6.3	
3.5-6.4	6.4	3.5	6.3	
3.5-7	7.0	3.5	6.3	
3.5-7.5	7.5	3.5	6.3	
3.5-8	8.0	3.5	6.3	
3.5-9	9.0	3.5	6.3	
3.5-9.5	9.5	3.5	6.3	
3.5-10	10.0	3.5	6.3	
3.5-11	11.0	3.5	6.3	
3.5-12	12.0	3.5	6.3	
3.5-12.7	12.7	3.5	6.3	
3.5-13	13.0	3.5	6.3	
3.5-14	14.0	3.5	6.3	
3.5-15	15.0	3.5	6.3	
3.5-15.5	15.5	3.5	6.3	
3.5-16	16.0	3.5	6.3	
3.5-17	17.0	3.5	6.3	
3.5-17.7	17.7	3.5	6.3	
3.5-18	18.0	3.5	6.3	
3.5-19	19.0	3.5	6.3	
3.5-20	20.0	3.5	6.3	
3.5-21	21.0	3.7	6.3	
3.5-22	22.0	3.7	6.3	
3.5-23	23.0	3.7	6.3	
3.5-24	24.0	3.7	6.3	
3.5-25	25.0	3.7	6.3	
3.5-26	26.0	3.7	6.3	
3.5-27	27.0	3.7	6.3	
3.5-28	28.0	3.7	6.3	
3.5-28.5	28.57	3.55	6.35	
3.5-29	29.0	3.7	6.3	
3.5-30	30.0	3.7	6.3	
3.5-35	35.0	3.7	6.3	

Part No.	A(L)	B(ID)	C(OD)	Package
4-2	2.0	4.2	6.3	2000
4-3	3.0	4.2	6.3	
4-3.4	3.4	4.2	6.3	
4-3.5	3.5	4.2	6.3	
4-4	4.0	4.2	6.3	
4-4.83	4.83	4.2	6.3	
4-5	5.0	4.2	6.3	
4-6	6.0	4.2	6.3	
4-7	7.0	4.2	6.3	
4-7.5	7.5	4.2	6.3	
4-8	8.0	4.2	6.3	
4-8.5	8.5	4.2	6.3	
4-9	9.0	4.2	6.3	
4-9.5	9.5	4.2	6.3	
4-10	10.0	4.2	6.3	
4-11	11.0	4.2	6.3	
4-12	12.0	4.2	6.3	
4-12.7	12.7	4.2	6.3	
4-13	13.0	4.2	6.3	
4-14	14.0	4.2	6.3	
4-15	15.0	4.2	6.3	
4-16	16.0	4.2	6.3	
4-17	17.0	4.2	6.3	
4-18	18.0	4.2	6.3	
4-19	19.0	4.2	6.3	
4-20	20.0	4.2	6.3	
4-21	21.0	4.2	6.3	
4-22	22.0	4.2	6.3	
4-23	23.0	4.2	6.3	
4-24	24.0	4.2	6.3	
4-25	25.0	4.2	6.3	
4-27	27.0	4.2	6.3	
4-28	28.0	4.2	6.3	
4-28.7	28.7	4.2	6.3	
4-29	29.0	4.2	6.3	
4-30	30.0	4.2	6.3	
4-40	40.0	4.2	6.3	
4-45	45.0	4.2	6.3	

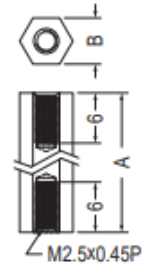


- Material: Nylon 66 (UL)
- Flame Class: 94V-2/94V-0
- Color: Natural/Black
- Unit: mm

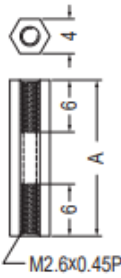


Part No.	A	Package
HP2.5-8	8.0	1000
HP2.5-10	10.0	

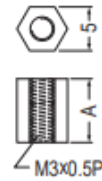
空个用期。



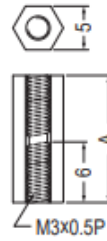
Part No.	A	B	Package
HP2.5-15	15.0	5.5	1000
HP2.5-15S	15.0	4.0	
HP2.5-25	25.0	5.5	
HP2.5-25S	25.0	4.0	
HP2.5-31	31.0	5.5	



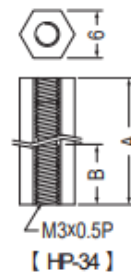
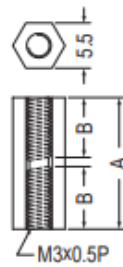
Part No.	A	Package
HPS2.6-18	18.0	1000
HPS2.6-19	19.0	
HPS2.6-31.75	31.75	



Part No.	A	Package
HPS-6	6.0	1000
HPS-8	8.0	
HPS-10	10.0	
HPS-12	12.0	



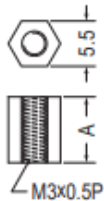
Part No.	A	Package
HPS-15	15.0	1000
HPS-17.4	17.4	
HPS-18	18.0	
HPS-20	20.0	
HPS-25	25.0	



【HP-34】

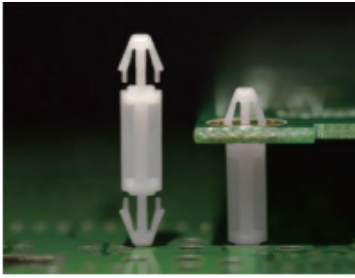
• 產品兩端皆有螺牙可供鎖付

Part No.	A	B	Package
HP-4	4.0		1000
HP-5	5.0		
HP-6	6.0		
HP-6.3	6.35		
HP-7	7.0		
HP-8	8.0		
HP-8.5	8.5		
HP-9	9.0		
HP-9.5	9.5		
HP-10	10.0		
HP-10.5	10.5		
HP-11	11.0		
HP-12A	12.0		
HP-12	12.7		
HP-13.5	13.5	6.0	
HP-14	14.0	6.0	
HP-14.5	14.5	6.0	
HP-15	15.0	6.0	
HP-15.5	15.5	6.0	
HP-16	16.0	6.0	
HP-16.5	16.5	6.0	
HP-17	17.0	6.0	
HP-17.5	17.5	6.0	
HP-18	18.0	6.0	
HP-19	19.0	6.0	
HP-20	20.0	6.0	
HP-21.5	21.5	6.0	
HP-22	22.0	6.0	
HP-24	24.0	6.0	
HP-25	25.0	6.0	
HP-26	26.0	6.0	
HP-27	27.0	6.0	
HP-28	28.0	6.0	



Part No.	A	Package
HP-4	4.0	1000
HP-5	5.0	
HP-6	6.0	
HP-6.3	6.35	
HP-7	7.0	
HP-8	8.0	
HP-8.5	8.5	
HP-9	9.0	
HP-9.5	9.5	
HP-10	10.0	
HP-10.5	10.5	
HP-11	11.0	
HP-12A	12.0	
HP-12	12.7	

Part No.	A	B	Package
HP-28.6	28.6	6.0	1000
HP-30	30.0	6.0	
HP-30.8	30.8	6.0	
HP-32	32.0	6.0	
HP-34	34.0	8.0	
HP-35	35.0	6.0	
HP-37	37.0	6.0	500
HP-38	38.0	6.0	
HP-40	40.0	6.0	
HP-42	42.0	6.0	
HP-45	45.0	6.0	
HP-47	47.0	6.0	
HP-49	49.0	6.0	
HP-50	50.0	6.0	
HP-52	52.0	6.0	
HP-54	54.0	6.0	
HP-55.5	55.5	8.0	
HP-60.2	60.2	6.0	
HP-70	70.0	10.0	
HP-76.7	76.7	8.5	



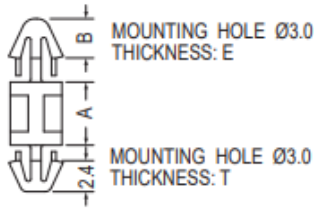
- Material: Nylon 66 (UL)
- Flame Class: 94V-2/94V-0
- Color: Natural/Black
- Unit: mm

MOUNTING HOLE Ø3.0
THICKNESS: T

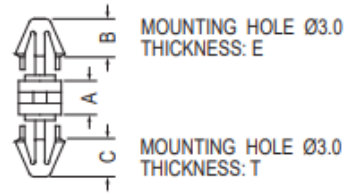


MOUNTING HOLE Ø3.0
THICKNESS: T

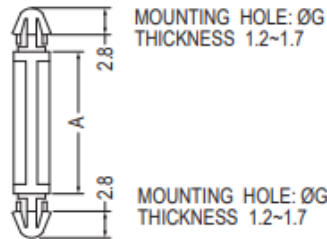
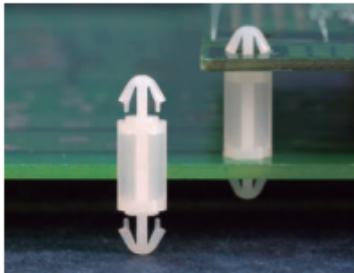
Part No.	A	B	C	T	Package
LCVU-8	8.0	3.7	3.7	1.2~1.8	1000
LCVU-9	9.0	3.55	3.55	2.0	
LCVU-10	10.0	3.7	3.7	1.2~1.8	



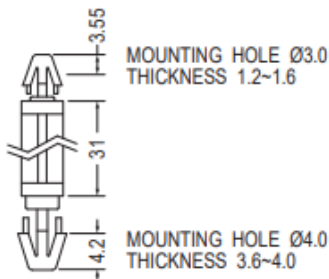
Part No.	A	B	E	T	Package
LCVA-2	2.0	3.1	1.6	0.8~1.0	2000
LCVA-2.5	2.5	3.0	0.8~1.0	1.6	
LCVA-4	4.0	3.1	1.6	0.8~1.0	
LCVA-5	5.0	3.1	1.6	0.8~1.0	



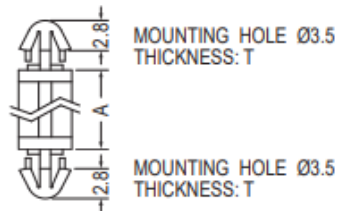
Part No.	A	B	C	E	T	Package
LCV-2.5	2.5	3.4	3.4	1.6	1.6	1000
LCV-3	3.0	3.55	3.55	1.6	1.6	
LCV-5	5.0	3.4	3.4	1.8	1.8	
LCV-6	6.0	3.6	3.6	1.2~1.7	0.8~1.0	



Part No.	A	G	Package
LCJ-14	14.0	3.0	1000
LCJ-15	15.0	3.2	
LCJ-19	19.0	3.0	
LCJ-21	21.0	3.0	

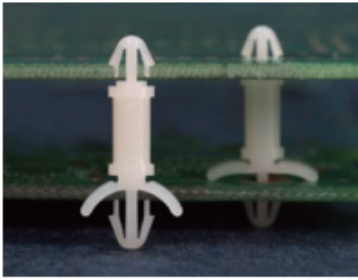


Part No.	Package
LCX-31	2000



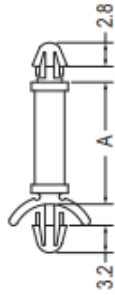
Part No.	A	T	Package
LCI-2.5	2.5	1.2~1.7	2000
LCI-3	3.0	1.2~1.7	
LCI-3.5	3.5	1.2~1.7	
LCI-4	4.0	1.2~1.7	
LCI-4.5	4.5	1.2~1.7	
LCI-5	5.0	1.2~1.7	
LCI-5.5	5.5	1.2~1.7	

Part No.	A	T	Package	
LCI-6	6.0	1.2~1.7	1000	
LCI-6.5	6.35	1.2~1.7		
LCI-7	7.0	1.2~1.7		
LCI-8	8.0	1.2~1.7		
LCI-9	9.0	1.2~1.7		
LCI-10	10.0	1.2~1.7		
LCI-10L	10.0	2.38		
LCI-11	11.0	1.2~1.7		
LCI-12	12.0	1.2~1.7		
LCI-15	15.0	1.2~1.7		
LCI-15(2)	15.0	1.6~2.4		
LCI-20	20.0	1.2~1.7		
LCI-22	22.0	1.2~1.7		
LCI-30L	30.0	1.6~2.4		500



- Material: Nylon 66 (UL)
- Flame Class: 94V-2/94V-0
- Color: Natural/Black
- Unit: mm

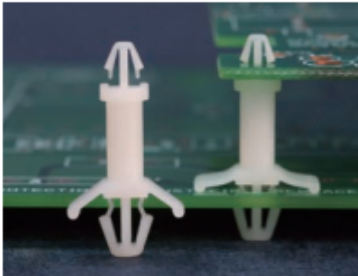
MOUNTING HOLE $\varnothing 3.0$
THICKNESS 1.2~1.7



MOUNTING HOLE $\varnothing 3.0$
THICKNESS 0.8~2.0

④ °

Part No.	A	Package
LCG-3	3.2	1000
LCG-5	4.8	
LCG-6	6.4	
LCG-8	7.9	
LCG-9	9.5	
LCG-11	11.1	
LCG-12	12.7	
LCG-14	14.3	
LCG-15	15.9	
LCG-17	17.0	
LCG-18	18.0	
LCG-19	19.0	
LCG-20	20.0	
LCG-26	26.0	

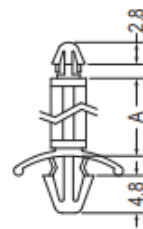


MOUNTING HOLE $\varnothing 3.0$
THICKNESS 1.2~1.7



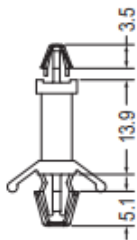
MOUNTING HOLE $\varnothing 4.8$
THICKNESS 0.8~2.2

MOUNTING HOLE $\varnothing 3.5$
THICKNESS 1.2~1.7



MOUNTING HOLE $\varnothing 4.8$
THICKNESS 0.8~2.2

MOUNTING HOLE $\varnothing 3.0$
THICKNESS 1.4~1.6

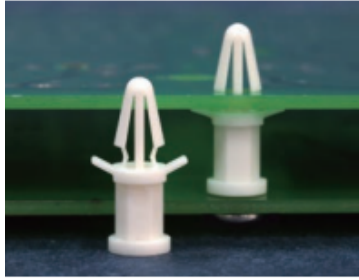


MOUNTING HOLE $\varnothing 4.8\sim\varnothing 5.0$
THICKNESS 0.8~2.0

Part No.	Package
LCBUA-13.9	1000

Part No.	A	Package
LCBT-3	3.2	1000
LCBT-5	4.8	
LCBT-6	6.3	
LCBT-8	8.0	
LCBT-10	10.0	
LCBT-12	12.0	
LCBT-14	14.0	
LCBT-16	16.0	
LCBT-18	18.0	
LCBT-25	25.0	

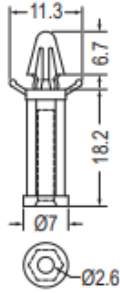
Part No.	A	Package
LCBU-3	3.2	1000
LCBU-5	5.0	
LCBU-6	6.3	
LCBU-8	8.0	
LCBU-10	10.0	
LCBU-12	12.0	
LCBU-14	14.0	
LCBU-16	16.0	
LCBU-18	18.0	
LCBU-25	25.0	



- Material: Nylon 66 (UL)
- Flame Class: 94V-2/94V-0
- Color: Natural/Black
- Unit: mm

力一規且接壓入PC板。

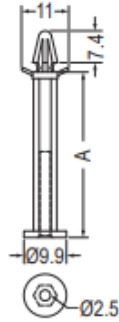
MOUNTING HOLE Ø4.0
THICKNESS 1.2~1.7



FOR M3 SELF-TAPPING SCREW

Part No.	Package
TCBS-18	1000

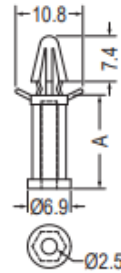
MOUNTING HOLE Ø4.0
THICKNESS 1.2~1.9



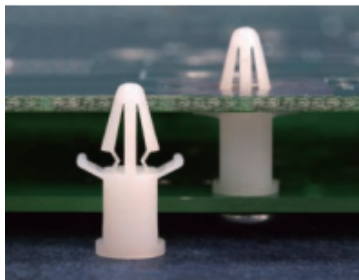
[TCBS-38.5]

FOR M3 SELF-TAPPING SCREW

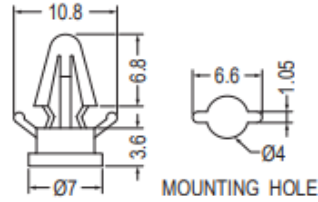
MOUNTING HOLE Ø4.0
THICKNESS 1.2~1.7



Part No.	A	Package
TCBS-5	5.0	1000
TCBS-6A	6.0	
TCBS-6	6.35	
TCBS-7	7.0	
TCBS-9.5	9.5	
TCBS-10	10.0	
TCBS-12.5	12.5	
TCBS-15	15.0	
TCBS-20	20.0	
TCBS-24.5	24.5	
TCBS-25	25.0	
TCBS-26	26.0	
TCBS-30	30.0	
TCBS-35	35.0	
TCBS-38.5	38.5	

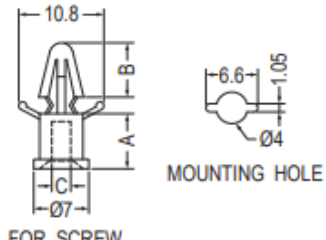


THICKNESS 1.2~1.7



MOUNTING HOLE

THICKNESS 1.2~1.7

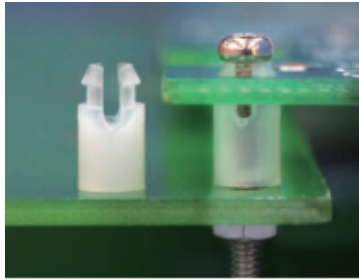


FOR SCREW

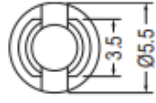
MOUNTING HOLE

Part No.	Package
TCBT-3.6	1000

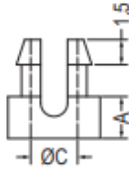
Part No.	A	B	C	Screw	Package
TCBT-7	7.0	6.9	2.4	4-40 UNC	1000
TCBT-7.7	7.7	5.9	2.6	M3	
TCBT-8.5	8.5	6.9	2.6	M3	
TCBT-16	16.0	6.9	2.4	4-40 UNC	



- Material: Nylon 66 (UL)
- Flame Class: 94V-2/94V-0
- Color: Natural/Black
- Unit: mm



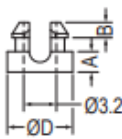
MOUNTING HOLE $\varnothing 4.0$
THICKNESS: T



FOR SCREW

Part No.	A	C	T	Screw	Package
SS2-2.5U	2.5	2.1	1.6~1.8	M2	2000
SS2-2.5S	2.5	2.7	1.6	M2.6	
SS2-3S	3.0	2.7	1.6	M2.6	
SS2-4S	4.0	2.7	1.6	M2.6	
SS2-5S	5.0	2.7	1.6	M2.6	
SS2-6S	6.0	2.7	1.6	M2.6	
SS2-2.5	2.5	2.8	1.6~1.8	M2.6	
SS2-3	3.0	2.8	1.6~1.8	M2.6	
SS2-4	4.0	2.8	1.6~1.8	M2.6	
SS2-5	5.0	2.8	1.6~1.8	M2.6	
SS2-5.4	5.4	2.8	1.6~1.8	M2.6	
SS2-6	6.0	2.8	1.6~1.8	M2.6	
SS2-8	8.0	2.8	1.6~1.8	M2.6	
SS2-9.5	9.5	2.8	1.6~1.8	M2.6	

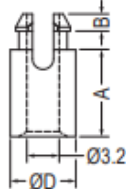
MOUNTING HOLE $\varnothing 4.8$
THICKNESS 1.0~1.2



FOR M3 SCREW

【SS-2S】

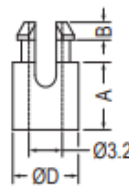
MOUNTING HOLE $\varnothing 4.8$
THICKNESS 1.2~1.7



FOR M3 SCREW

【SS-10A】

MOUNTING HOLE $\varnothing 4.8$
THICKNESS 1.2~1.7



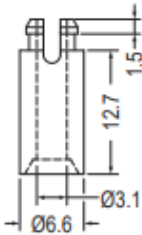
FOR M3 SCREW

Part No.	A	B	D	Package
SS-2S	2.0	1.5	6.4	1000
SS-2.4	2.4	1.5	6.4	
SS-3	3.2	1.5	6.4	
SS-3.5	3.5	1.5	6.4	
SS-4	4.0	1.5	6.4	
SS-4.5	4.5	1.5	6.4	

Part No.	A	B	D	Package
SS-5	4.8	1.5	6.4	1000
SS-5A	5.0	1.5	6.4	
SS-6	6.4	1.5	6.4	
SS-7	7.0	1.5	6.5	
SS-7.4	7.4	1.7	6.5	
SS-8	7.9	1.5	6.4	

Part No.	A	B	D	Package
SS-10	9.5	1.5	6.4	1000
SS-10A	9.5	1.7	6.5	
SS-11	11.1	1.5	6.4	
SS-12A	12.0	1.5	6.4	
SS-12	12.7	1.5	6.4	
SS-14	14.2	1.5	6.4	
SS-14.5	14.55	1.5	6.4	
SS-15	15.0	1.5	6.4	
SS-16	15.9	1.5	6.4	
SS-17.2	17.2	1.5	6.4	
SS-19	19.1	1.5	6.4	
SS-22	22.2	1.5	6.4	500
SS-25	25.4	1.5	6.4	

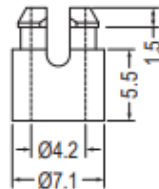
MOUNTING HOLE $\varnothing 4.8$
THICKNESS 1.6



FOR M3 SCREW

Part No.	Package
SSA-12.7	1000

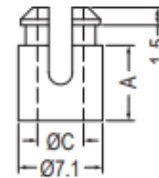
MOUNTING HOLE $\varnothing 5.8$
THICKNESS 1.6



FOR M3.5 or M4 SCREW

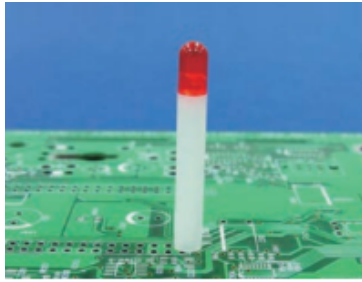
Part No.	Package
SSA4-5.5	1000

MOUNTING HOLE $\varnothing 5.9$
THICKNESS: T



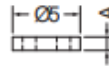
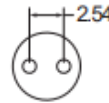
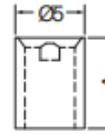
FOR M4 SCREW

Part No.	A	C	T	Package
SSU4-6.3	6.35	3.9	1.2~1.7	1000
SSU4-6.3L	6.35	4.3	1.6	
SSU4-9.5	9.5	3.9	1.2~1.7	
SSU4-9.5L	9.53	4.3	1.6	
SSU4-12.7	12.7	3.9	1.2~1.7	
SSU4-12.7L	12.7	4.3	1.6	
SSU4-15.9	15.9	3.9	1.2~1.7	

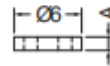
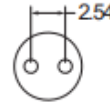


- Material: Nylon 66 (UL)
- Flame Class: 94V-2/94V-0
- Color: Natural/Black
- Unit: mm

此同様に、誤った接続による回路の切断、短路。



[LED-1]

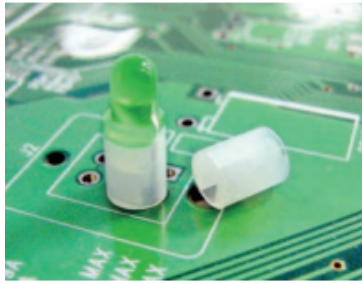


[LED-1.5L]

Part No.	A	Package
LED-1	1.0	2000
LED-1.5	1.5	
LED-1.5L	1.5	
LED-2	2.0	
LED-2.5	2.5	
LED-3	3.0	
LED-3.5	3.5	
LED-4	4.0	
LED-4.5	4.5	
LED-5	5.0	
LED-5.5	5.5	
LED-6	6.0	
LED-6.5	6.5	
LED-6.8	6.8	
LED-7	7.0	
LED-7.5	7.5	
LED-8	8.0	
LED-8.5	8.5	

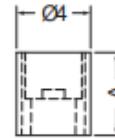
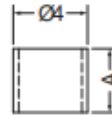
Part No.	A	Package
LED-8.8	8.8	2000
LED-9	9.0	
LED-9.5	9.5	
LED-10	10.0	
LED-10S	10.0	
LED-10.5	10.5	
LED-11	11.0	
LED-11.5	11.5	
LED-12	12.0	
LED-12.5	12.5	
LED-13	13.0	1000
LED-13.5	13.5	
LED-14	14.0	
LED-14.5	14.5	
LED-15	15.0	
LED-15.5	15.5	
LED-16	16.0	
LED-16.5	16.5	

Part No.	A	Package
LED-17	17.0	1000
LED-17.5	17.5	
LED-17.7	17.7	
LED-18	18.0	
LED-18.5	18.5	
LED-19	19.0	
LED-19.5	19.5	
LED-20	20.0	
LED-20.5	20.5	
LED-21	21.0	
LED-21.5	21.5	
LED-22	22.0	
LED-22.5	22.5	
LED-23	23.0	
LED-23.5	23.5	
LED-24	24.0	
★LED-27	27.0	
LED-28	28.0	



- Material: Nylon 66 (UL)
- Flame Class: 94V-2/94V-0
- Color: Natural/Black
- Unit: mm

按腳個買彎曲、折斷、短路，且使LED高度一致，免用治具，尺寸齊全。

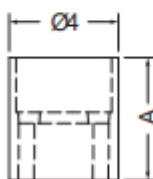


[LEDS-0.8-LEDS-3.5]

Part No.	A	Package
LEDS-0.8	0.8	2000
LEDS-1	1.0	
LEDS-1.5	1.5	
LEDS-2	2.0	
LEDS-2.5	2.5	
LEDS-3	3.0	
LEDS-3.5	3.5	
LEDS-4	4.0	
LEDS-4.5	4.5	
LEDS-5	5.0	
LEDS-5.5	5.5	
LEDS-6	6.0	
LEDS-6.5	6.5	

Part No.	A	Package
LEDS-7	7.0	2000
LEDS-7.5	7.5	
LEDS-8	8.0	
LEDS-8.5	8.5	
LEDS-9	9.0	
LEDS-9.5	9.5	
LEDS-9.8	9.8	
LEDS-10	10.0	
LEDS-10.5	10.5	
LEDS-11	11.0	
LEDS-11.5	11.5	
LEDS-12	12.0	
LEDS-12.5	12.5	
LEDS-13	13.0	
LEDS-13.5	13.5	
LEDS-14	14.0	
LEDS-14.5	14.5	
LEDS-15	15.0	

Part No.	A	Package
LEDS-15.5	15.5	2000
LEDS-16	16.0	
LEDS-16.5	16.5	1000
LEDS-17	17.0	
LEDS-17.5	17.5	
LEDS-18	18.0	
LEDS-18.5	18.5	
LEDS-19	19.0	
LEDS-19.5	19.5	
LEDS-20	20.0	
LEDS-20.5	20.5	
LEDS-21	21.0	
LEDS-21.5	21.5	
LEDS-22	22.0	
LEDS-22.5	22.5	
LEDS-23	23.0	
LEDS-23.5	23.5	
LEDS-24	24.0	



Part No.	A	Package
LEDS-3S	3.0	2000
LEDS-4S	4.0	
LEDS-4.5S	4.5	
LEDS-5S	5.0	
LEDS-5.5S	5.5	
LEDS-6S	6.0	
LEDS-6.5S	6.5	
LEDS-7S	7.0	
LEDS-7.5S	7.5	
LEDS-8S	8.0	
LEDS-8.5S	8.5	
LEDS-9S	9.0	
LEDS-9.5S	9.5	
LEDS-10S	10.0	
LEDS-11S	11.0	
LEDS-11.5S	11.5	
LEDS-12S	12.0	
LEDS-12.5S	12.5	

Part No.	A	Package
LEDS-13S	13.0	2000
LEDS-13.5S	13.5	
LEDS-14.5S	14.5	
LEDS-15S	15.0	
LEDS-15.5S	15.5	
LEDS-16S	16.0	1000
LEDS-16.5S	16.5	
LEDS-17S	17.0	
LEDS-17.5S	17.5	
LEDS-18S	18.0	
LEDS-18.5S	18.5	
LEDS-19S	19.0	
LEDS-20S	20.0	
LEDS-20.5S	20.5	
LEDS-21S	21.0	
LEDS-21.5S	21.5	
LEDS-22S	22.0	
LEDS-22.5S	22.5	
LEDS-23S	23.0	